

Fax Transmission Sheet

Pages sent including this cover sheet 2.

Date: 5/27/04

Attn: C Brooks

FAX#: 804614093

From: H. Miller

Tel # _____

FAX# _____

Instructions / Comments:

Requested Locals

②

COLASH
MICKEL

NAMY MAY DAVIDM.

HARRY BEAT SOUND

SAUNDH
COMBIN

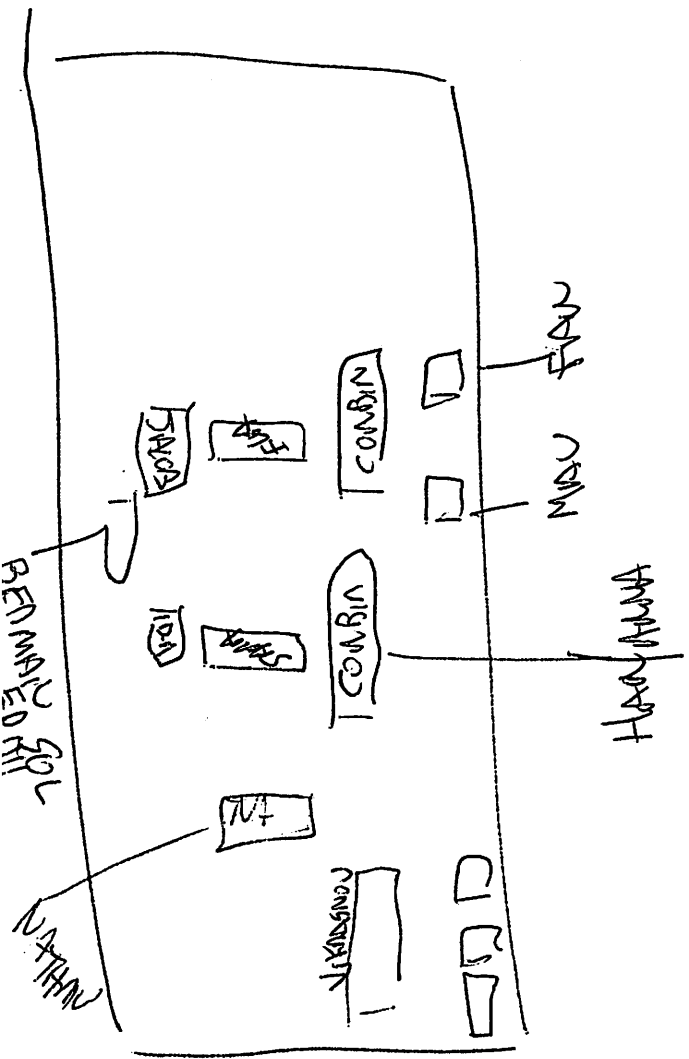
EVIA

COMBINA NATHAN

HARRY ANNA

MANU FRAN

BRAN



PERLMAN FUNERAL HOME

1026 Main Street • Worcester, Massachusetts 01603 • (508) 756-2200

HARRY J. PERLMAN
1876 - 1948
GEORGE G. PERLMAN
1907 - 1976
ROBERT PERLMAN
RICHARD J. PERLMAN

Directions to B'Nai Brith Cemetery, St. John's Rd., Worcester

Mass Tpke East or West and Exit at Exit # 10 "Auburn Exit."

After exiting, follow Rte 290 EAST and in approximately 4 miles, exit at Exit # 11- "College Square Exit."

At bottom of exit ramp, go straight ahead and take a left at second red light onto Cambridge St.

On Cambridge St., approximately 300 feet after the first red light, you will see St. John's Cemetery on your left side.

When the cemetery comes to an end, take a left onto St. John's Rd.

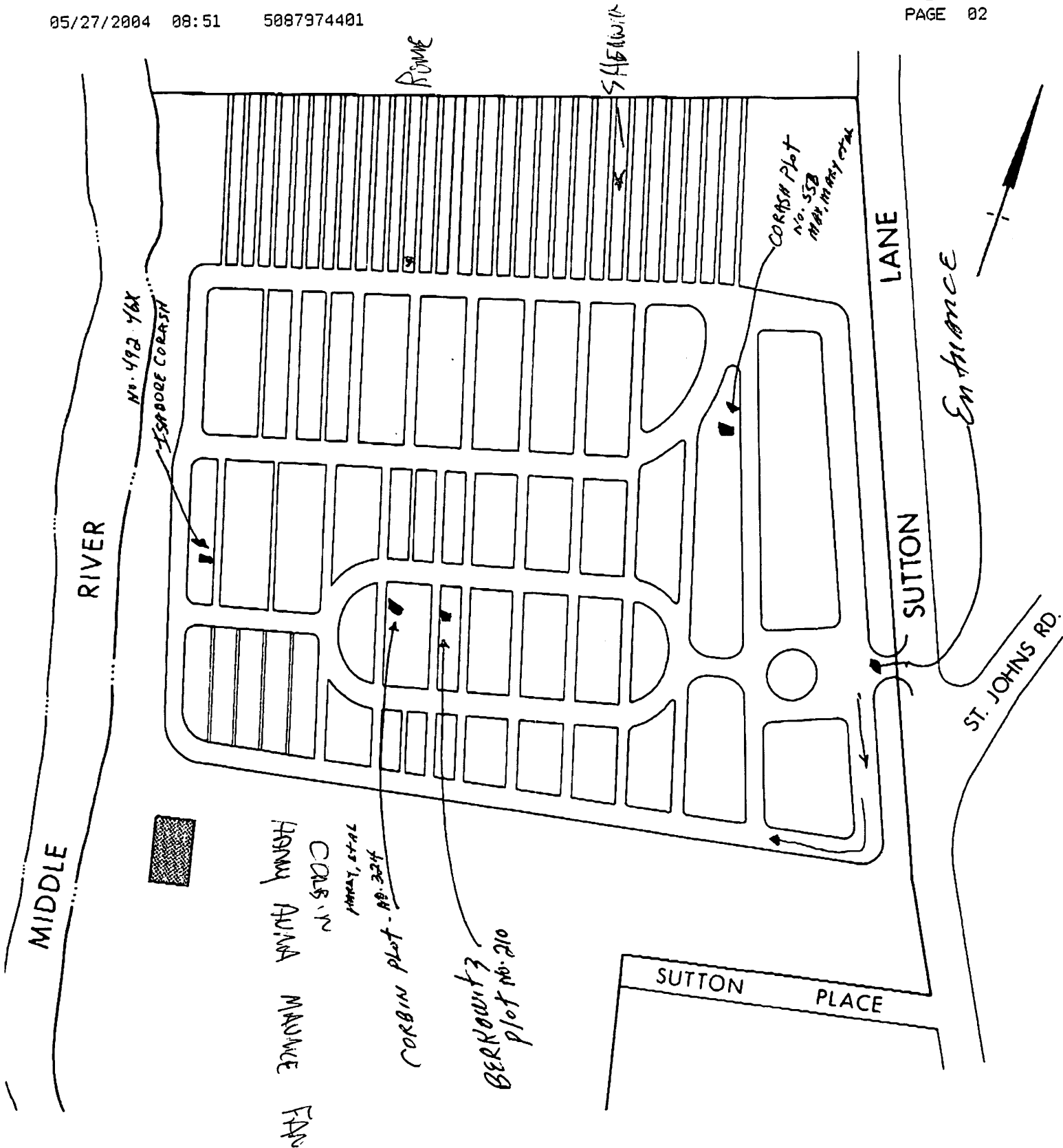
Just before St. John's Rd. comes to a dead end, you will see B'Nai Brith Cemetery on your right side.

HANCOX MILLER
508-756-8137



CONSIDERATION FOR THE LIVING • DEDICATED TO SERVICE

A Family Service Affiliate of AFFF/SCF
Personalized Local, Countryside & International Services Where You Reside, Work and Travel
492 Rock Street • Fall River, MA 02720 • (800) 344-7526



Worcester B'nai Brith Cemetery Corp.

Est. 1922

Name _____ Lot No. _____